

TRINA TSM-PC05, 215W to 235W

TYPICAL ELECTRICAL CHARACTERISTICS

Type	TSM-PC05	215	220	225	230	235
Max-Power	Pm(W)	215	220	225	230	235
Power Tolerance	(%)	±3	±3	±3	±3	±3
Max-Power Voltage	Vm(V)	28.5	29.0	29.4	29.8	30.1
Max-Power Current	Im(A)	7.55	7.60	7.66	7.72	7.81
Open-Circuit Voltage	Voc(V)	36.4	36.8	36.9	37.0	37.1
Short-Circuit Current	Isc(A)	8.13	8.15	8.20	8.26	8.31
Max-System Voltage	(VDC)	1000				
Cell Efficiency	η_c (%)	14.7	15.1	15.4	15.8	16.1
Module Efficiency	η_m (%)	13.1	13.4	13.7	14.1	14.4
Number, type and arrangement of cells		60 pcs. Multi-Crystalline Silicon (6x10)				
Cell Size		156 mm x 156 mm				
No. of Bypass Diodes	(pcs.)	6				
Max. Series Fuse	(A)	14				
Pm Temperature Coefficient	(%/°C)	- 0.45				
Isc Temperature Coefficient	(%/°C)	0.05				
Voc Temperature Coefficient	(%/°C)	- 0.35				
NOCT- Nominal Operating Cell Temperature	(°C)	47±2				

MECHANICAL CHARACTERISTICS

Cable type, Diameter and Length		Ø= 4 mm² L= 1000 mm TÜV certified
Type of Connector		MC3 or MC4, Compatible Type III or IV
Dimension A*B*C		1650*992*46 (mm)
Weight		19.5 Kg
No. of Draining Holes In Frame		8
Glass, Type and Thickness		High Transmission, Low Iron, Tempered Glass 3.2 mm

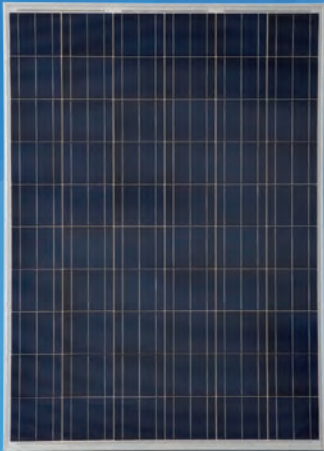
PACKAGING CONFIGURATION

Packing Configuration		20 pcs./box
Quantity/Pallet		1 box / pallet
Loading Capacity		520 pcs/40ft or 120 pcs/20ft

ABSOLUTE RATINGS

Dielectric Insulation Voltage	(VDC)	3000 max.
Operating Temperature	(°C)	-40~+85
Storage Temperature	(°C)	-40~+85

*STC Conditions(1000W/m²; 1.5 AM and 25°C Cell temperature)



High Efficiency
Multicrystalline Solar Modules

STRENGTHS

- Tolerance ± 3%
- 3 Bus Bar Configuration
- Plug & Play Connectors
- High Transmission, Low Iron Tempered Glass
- Can bear loads up to 5400 Pascals (IEC 61215 2nd)

WARRANTY

Manufacturing: 5 years
Power production: 90% : 10 years
80% : 25 years

CERTIFICATIONS

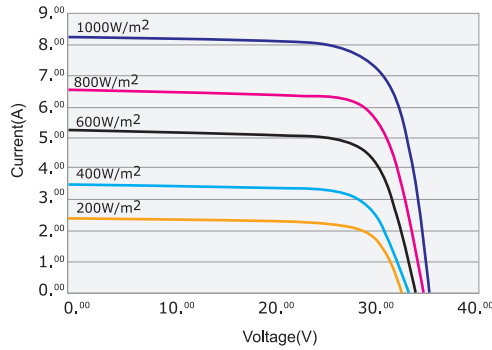




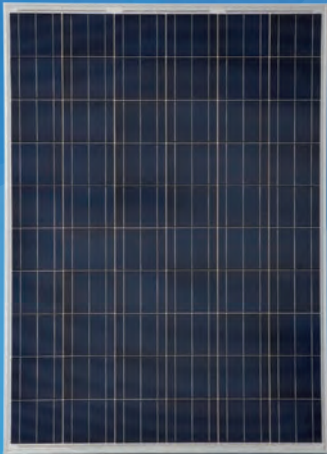
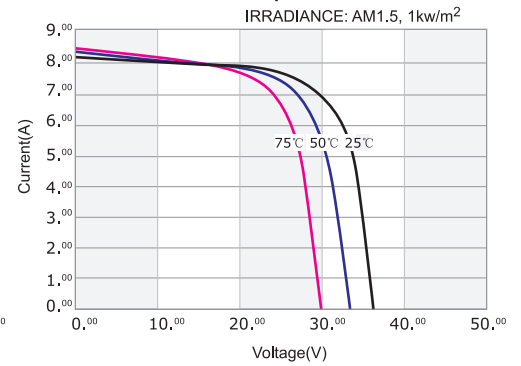
TRINA TSM-PC05, 215W to 235W

I-V CURVES

I-V Curves of PV module TSM-220PC05

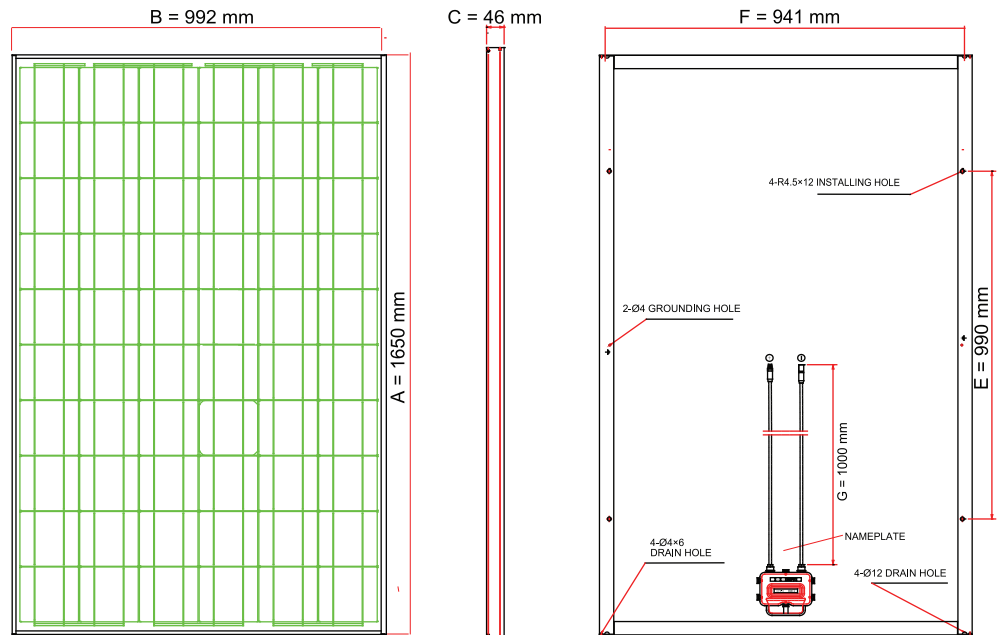


I-V Curves of module TSM-220PC05 at various cell temperatures



High Efficiency
Multicrystalline Solar Modules

DIMENSIONS



Dimensions A*B*C	1650*992*46 (mm)
Installation Hole E*F	941*990 (mm)
Cable Length G	1000 mm

*The company is not responsible for potential typing errors.